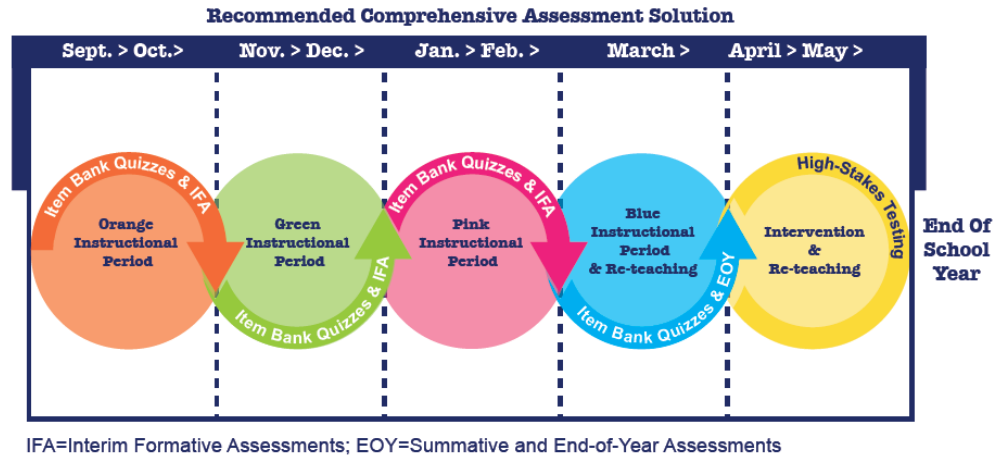


Inspect® is an item bank and suite of over 300 pre-built assessments. Our solution offers an industry-leading combination of rigor, innovation, integrity, and instructional guidance at one price. The result is ease of assessment delivery that provides specific feedback to teachers so they can quickly inform instruction to increase student learning. The features of the Inspect® solution include:

Pre-Built Assessment Suite —

Inspect® includes, *at no additional cost*, **over 300 pre-built assessments**, including an Interim Formative Benchmark Program, a Summative/End-of-Year Program, and a Performance Task Program, designed to emulate end-of-year, high-stakes exams. Together, these assessments can be used throughout the year to complete a comprehensive assessment program.



Assessments en Español

Inspect® includes Interim Formative and Summative Assessments translated into Spanish by professional translators using idiomatic translation techniques. These assessments will assist districts and schools with assessments for dual-immersion programs.

ELA and Mathematics — This innovative, K-12 assessment solution has over 37,000 items written to rigorous college and career readiness standards, with over 14,000 ELA items and over 22,000 math items. Items are written using an **evidence-centered design**, following the same specifications used by SBAC, PARCC, and other high-stakes testing providers. Inspect® is constantly growing with **hundreds of new innovative items added each month**.

Real-World Situations — To display mastery of high-rigor standards, students must be able to apply math in various situations. This requires a deep **conceptual and procedural knowledge** of mathematics. Inspect® items provide opportunities for students to demonstrate their math skills in real-world contexts.

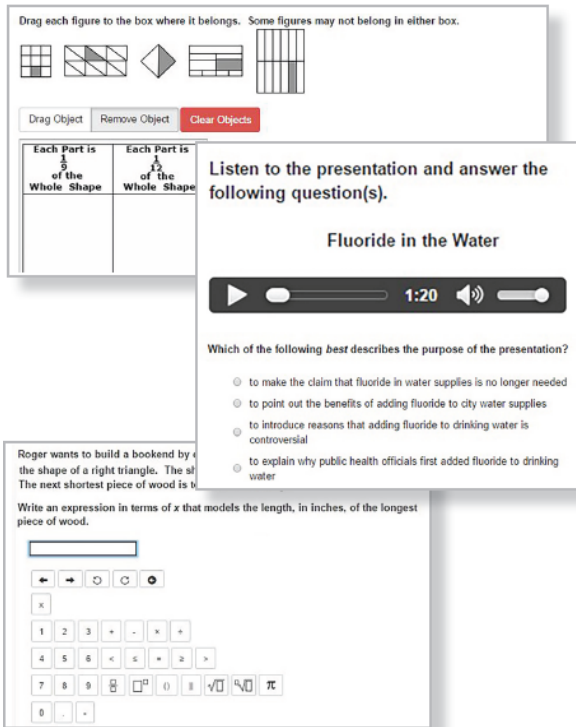
High Quality Passages — Both quantitative and qualitative measures are used to assess grade-level appropriateness of passages within Inspect®. Inspect® goes beyond literary texts, offering **complex history, technology, and science-based content** to support the shifts necessary for college and career readiness. These passages include items written to the literacy standards for History/Social Studies and Science and Technical Subjects. Additionally, Inspect® includes dual-text passages, allowing students to synthesize across texts.

Classroom Checkpoints

These mini formative assessments (6-8 questions) include standards within a given content cluster. Checkpoints allow for a quick ‘ticket-out-the-door’ evaluation of student learning in order to gauge short-term progress.

Inspect® Science and History — Inspect® currently offers over **8,000 science** items and over **5,500 history** items.

Inspect® is developed by Key Data Systems - an education industry leader in psychometric services and standards-based assessment. Feature availability and item counts may vary by state, so please check with your Inspect® representative to learn more.



Technology-Enhanced Item Types — Inspect® encompasses the most comprehensive array of item types in the industry. In addition to traditional items, Inspect® includes all item types currently used in the high-stakes testing environment:

- ✓ Multiple choice, single correct response
- ✓ Multiple choice, multiple correct responses
- ✓ Evidence-based selected response
- ✓ Short text/Constructed response
- ✓ Equation/Numeric
- ✓ Fill-in tables
- ✓ Drag and drop
- ✓ Graphing
- ✓ Hot Spot
- ✓ Multi-part
- ✓ Matching tables
- ✓ Hot text
- ✓ Drop down
- ✓ Technology Enabled Listening

Item Development Process — Inspect® employs the **most demanding item writing process** in the industry. To be accepted, each item must be unanimously approved by three separate content experts, ensuring items are free of any bias and sensitivity concerns, aligned to the appropriate standard(s), and meet the rigor expected for the

standard. In addition, each item writer must maintain an 85% acceptance rate in order to continue contributing to the item bank.

Other Key Features

- Adds hundreds of items each month
- Spans grades K-12 ELA and Math
- Covers ELA items in reading, writing, listening, and language
- Contains items requiring evidence-based responses
- Provides distractor rationale for all multiple choice, evidence-based selected response, and multiple correct response items
- Includes complete rubrics with sample responses for all constructed response items

Item Integrity — Statistical data are collected from items to ensure items and assessments in the bank are **reliable and valid**. Items that fall outside of acceptable statistical norms are removed from the Inspect® Item Bank or revised and reevaluated.

Item Attributes — Mathematics and English Language Arts items include **DOK, Revised Bloom’s Taxonomy**, and SBAC and PARCC attribute alignments (e.g., claims, sub-claims, targets, etc.). Mathematics items are also aligned to the **Standards for Mathematical Practices**. These attributes can be used during test creation, reporting, and filtering.

Inspect® is developed by Key Data Systems - an education industry leader in psychometric services and standards-based assessment. Feature availability and item counts may vary by state, so please check with your Inspect® representative to learn more.